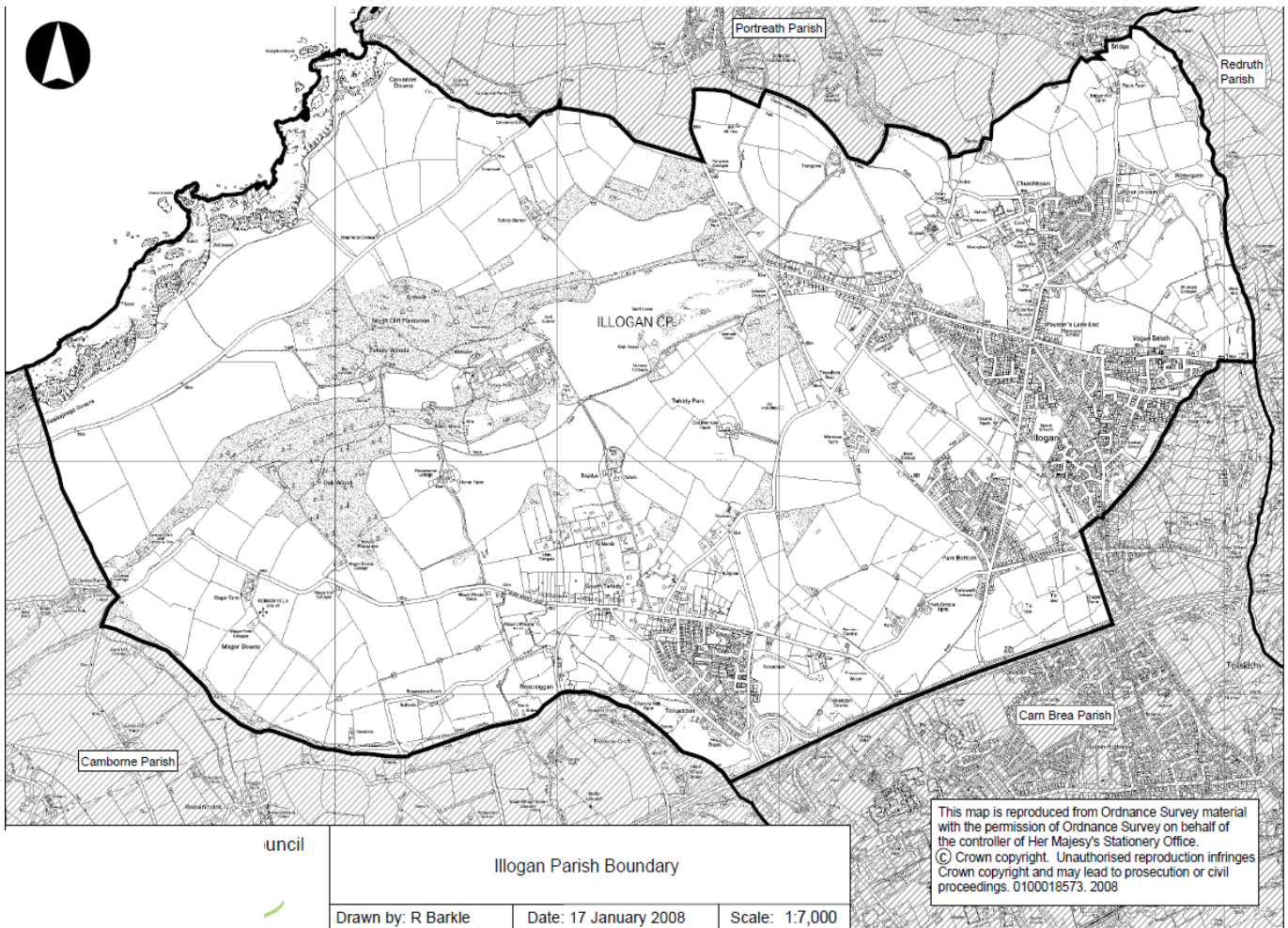


Illogan Parish



Illogan Parish

Illogan Parish is made up of a number of distinct areas including: Churchtown, several farms (Bridge Hill, Home, Nance, Magor, Merrose, Rayle, Park, and Trengove) Illogan, North Cliffs, Park Bottom, Tehidy and Tolvaddon.

Illogan Civil Parish is divided up into three wards and is served currently by 14 councillors:

- Illogan Ward;
- Park Bottom Ward;
- Tehidy Ward.

For the purposes of government statistical analysis the civil parish is divided up into 4 areas:

- Illogan East;
- Tolvaddon;
- Park Bottom and Tehidy;
- Illogan West and Paynters Lane.

With reference to data provided by the Office for National Statistics it is clear that within our parish we have a wide spread of types of resident ranging from the relatively well off to those on very low or no incomes. Areas of economic deprivation can be found in all wards in Illogan Parish.