

## Inside this issue:

Editors Comments	2
Council Reports	3
What a load of rubbish !	4
Parish Hall, Allotments'	5 6
The Wellbeing Centre	7 8
Parish Church,	9
Asksara, Air Ambulance	10
Methodist Hall St Piran	11
Library, WI, Cancer research	12
Letters	13
Scouting, Play Group,	14
Fruity Things	15
Maningham Wood	16
Out of this world	17
Harris Mill Hall, FC, Penwartha	18
Nice Pictures	19
Parish Council Contacts	20

**Welcome to the Spring Edition** of the Parish Review. Further information is included about what's going on in the parish during this period between March 1st to the end of May, some general articles of what may be of interest, and some little snippets which we hope may raise a smile. Also, the Review is also available on line at the Parish Council Website. Readers will now, I think, see a pattern forming in the format of the Review in that several pages are dedicated to our major Parish facilities and that the wording and format for these entries in general remains the same from issue to issue. Repetition is the nature of the beast for these facilities and sometimes only meeting dates change.

One of the reasons why I have decided to maintain a 20 page issue is to allow space for different items to be added in each issue to make a more interesting read than simply a diary of events. I hope that this meets with general approval and I would be delighted to receive any comments for or against this format policy. Do you have something to say ? Please let me know, if I can print it I will.

## St Piran's Day is March 5th (See page 11)

### The Illogan Parish Plan Near to Completion

It was identified at a very early stage that the Parish Plan had to be a document that accurately represented the views and desires of the people of Illogan Parish, not just those of the Parish Council or some other organisation tasked with the project.

It was agreed at a public meeting that a separate body should be set up to carry out the research and production of the plan and that the process would be facilitated by the Parish Council.

As a result the Parish Plan Steering Group was formed whose membership was drawn from residents of Illogan Parish and included some Parish Councillors. The initial role of the steering group was to develop a questionnaire that would

give residents the chance to raise any concerns they had, along with their hopes and aspirations.

The steering group then had to analyse and interpret all the responses. The result of their hard work has formed the basis of our Parish Plan.

The Illogan Parish Plan is now getting to a very exciting stage. We will have a final presentation and consultation evening in March with the official launch taking place at the end of March.

Illogan Parish Council will then ensure all residents receive a user friendly version of the plan.

*'The end is in sight, get involved'*



**The next issue of the Review will be available on 1st June 2011.**  
**Potential entries for inclusion are to be with the Editor by the 10th May**



*Leonardo DA Vinci could write with one hand and draw with the other at the same time. He also invented scissors, and it took him 10 years to paint Mona Lisa's lips.*



## EDITORS COMMENTS



The probability of someone watching you is proportional to the stupidity of your action

Dear Reader



Remember the long gone days of last Christmas? I can't let it go without saying that the Christmas Tree lights, the lantern parade and the other events at Illogan and Park Bottom seemed to be a

great success. There were a few little hiccups along the way but I think that it all turned out just fine in the end.

Congratulations to all those involved with the organising and of course to all of you who attended the events to make them both a success.



### For this coming Christmas

it is intended to be a little more ambitious.

The Parish Council Committee would like to see a slight change to the organising structure. The Council Committee will remain in place but act primarily as a facilitator to three working parties made up of volunteers from the community.

These three working parties will comprise of some 4 or 5 volunteers from each of the areas of Illogan, Park Bottom and Tolvaddon. Their prime objective is to work with the Parish Council Committee to help organise the activities to build on the recent success of the Christmas tree and lights event. The plan for this coming year will be to have a tree, lights and activities in each of the three areas

(Budget providing) but -

### The Council will need your help to make it happen.

Volunteers will be asked to form their individual working party, elect a spokesperson for their group to attend the Committee meetings where requirements and responsibilities will be established and subsequently progressed through the year. 5 or 6 evening meetings will probably be required of no more than about one hour

If you would like to see the recent events repeated and can offer your services, or if you require more details, please **contact** the Committee chairman Terry Wilkins in the first instance on [01209 842390](tel:01209842390) and then attend an informal gathering for a chat which is pencilled in for sometime in June.

**The Ray Uren Memorial Award** is presented each year to an Illogan Parish resident who is deemed to have 'gone that extra mile' in voluntary work within the Parish. The Parish Council are now seeking nominations for the award from Parish residents. All nominations will be reviewed by the Council Committee and then full Council before a final decision is made and the award will be made later in the year with details being made available to the local press.

If you think that you, or somebody you know fits the bill and you feel in general terms that the Parish has benefited in some way by the voluntary efforts made, please make **contact** with the Clerk to the Council as detailed on the back page for further details and how to register potential nominees

**Woodland Reduction:** Last issue I put in a snippet from the internet regarding the possible sale of our woodlands. I noted that in a recent local newspaper report that this was designed to happen here in Cornwall.



Forestry Commission owned areas, including Idless Woods at Truro, Cardinham Woods in Bodmin and Herodsfoot near Looe could all be taken out of public ownership. The plans were part of a move to slim down the Forestry Commission and save money. Ministers said that they **HOPED** the areas would be bought by Community Groups and Charities but they would be willing to sell the land to private UK or foreign companies if necessary. However, I now understand that common sense has prevailed and the Government are reviewing the idea.



**DEFRA Minister Jim Paice** must have been of the opinion that the Community groups and charities could financially compete with international developers and when bids were won by developers he must have imagined that they would manage the areas for the benefit of public recreation and that they wouldn't dream of felling any of the woodland to make way for other more profitable projects ! **Shouldn't we be protecting our woodland?** I think we need to be wary about this in these times

*Today, the UK is one of the least wooded places in Europe. Only 12 per cent of the UK's landscape is wooded compared with an average of 44 per cent in other European countries. And, only a small proportion of this, less than half, is native woodland.*

A fine is a tax for doing wrong. A tax is a fine for doing well !

## Cornwall Councillor Terry Wilkins MBE



Well, it seems like a long time ago but Christmas in Illogan and Park Bottom went very well as you have probably read in the Editors comments on the front page. All thanks to the Children and Headteacher Simon Hague and his excellent team at Illogan school.

Incidentally, Mr Hague had an addition to his Family just before Christmas so, many congratulations to him and his good Lady.

I spent the previous three Thursdays at the school helping to build a lantern and it was very enjoyable I can tell you. It got me away from all the stresses and strains of Council debates.

I don't want to use this space as a political arena because it is for Illogan Parish. Please let the Editor know if you would like to hear anything that comes out of Council and I will be happy to include it here.

Congratulations go to the Illogan Christmas lights Committee, who won the Community award from Coastline they did an excellent job re-creating the Christmas lights Festival. I can only see this getting better.

After my article in The West Briton with regard to dog fouling, I have received quite bit of abuse and some congratulations for bringing the subject up. I must thank some residents for bringing the problem to my attention and for their help in distributing my letter.

Lastly, I am having a surgery at Penwartha hall on the 26th of March between 11.00am and 2.00pm. Also attending will be Roger Benney Vice Chairman of Illogan Parish Council. You are welcome to come and air your views but no tomato throwing please !!!



## Parish Council Chairman David Ekinsmyth



The Xmas period is supposed to be the quietest period of the year for the Parish Council and I am grateful for that as we have been operating without our clerk who has unfortunately been unwell.

There are lots of matters that are dealt with seamlessly on behalf of us all that must be done to a schedule for everything to work smoothly and it is the clerk who manages all these and ensures that the councillors are well advised at all times. In her absence urgent matters have been delegated to me, as Chairman, and I have done my best to discharge these responsibilities with the help of other councillors and key individuals contracted to work for us. So for the time being please direct any communications to me.

I will be extremely relieved to see Susanne Ballinger fully recovered and back to work but in the meantime ask for your indulgence should matters take a little longer than usual.

The Council has decided that it is essential that we have a designated Parish Office where our staff can operate from and which is accessible to the public. Various options are under consideration and I will provide more information on the progress of this project in my next report.

There are several other major projects to be implemented in the next few months, including the publication of the Parish Plan, the introduction of the Green Ripple Project and any other additional duties that may come our way as Cornwall Council works through it programme of efficiencies. So there is going to be plenty to do.

In these circumstances the council is proposing to employ an assistant to the clerk who will be able to support and compliment the work she already does, and provide necessary back-up should we need it. Clearly the new assistant will need somewhere to work when appointed and this reinforces the need for a parish office.

I was delighted with the success of the Christmas Lights in Illogan and Park Bottom and would like to add my thanks to those who organised the event so well. Thanks also to the children, staff and parents of Illogan School whose musical activities and attractive lanterns added so much to the events, and of course the band and choristers. I hope we will be able to enjoy more successful community led events over the next year.

*Famous quote by former French General and President :*

*"I have come to the conclusion that politics is too serious a matter to be left to the politicians." ~ Charles de Gaulle*







## WHAT A LOAD OF RUBBISH !

4

A difficulty in life is knowing which bridge to cross, and which one to burn

Here in Cornwall we manage to produce more than 285,000 tonnes of waste each year. 37% or so is recycled through the roadside collection schemes and recycling centres dotted around the place. In some areas 75% of households recycle but in the Duchy some areas are as low as 30% - that means that 2 household in 3 put recyclable items out with their general rubbish which heads into landfill sites.



EU directives state that by 2020, only a third of the amount land filled in 1995 will be able to be sent to landfill so more must be done to promote the recycling process, not just us the

consumers, but also in the manner of the packaging of the foodstuff and goods we purchase.

Recent figures released by Cornwall Council indicate that the cost to the ratepayer of collecting, transporting and land filling one black bag of rubbish is £1.99p but it only costs £0.41p to collect and recover one box of recyclable material.

The landfill tax is presently £48 per tonne and this is set to rise each year by a further £8 until 2014 when, presumably, the



incremental cost increase will be reviewed. The cost to us the ratepayers in the Duchy for landfill is a staggering £19Million each year which will of course increase year by year by something in the region of £1.4Million. Additionally we are told that the rubbish placed into landfill rots down over a period of time producing gasses which adds to the global warming effect.

Clearly then landfill is an option which has three adverse effects on us as individuals which we should all consider:

1. **Cost** – obviously it has to be paid for and none of us want to see an increase in our rates to cover the increasing costs.
2. **Landfill areas** – I would suggest that none of us want to see more good land used for this purpose and none of us want landfill areas in our locality or where we spend our leisure time, but more land for this purpose must follow unless we reduce the amount of rubbish we produce.

Even finding an alternative way to dispose of it, such as incineration is not ideal, the incinerators must be built somewhere.

3. **Global warming** - If, as the experts tell us, the gasses produced as a result of landfill are contributing to the effect of global warming. Is this really a legacy which we want to pass to future generations?

### What happens to recycled material?

**Newspapers and magazines** collected by the Council are sent to Aylesford Newsprint in Kent where they become new newspapers.

**Other paper** is moved to Devon where it becomes cardboard and recycled cardboard is turned into packaging.

**Plastic bottles** go to the Liverpool area which are reprocessed into agricultural drainage pipes, furniture and other items.

**Glass** heads to Falmouth for export to Europe to become new glass bottles.

**Aluminium and foil** goes to Cheshire to be made into items such as saucepans.

**Steel cans** get to Newcastle where they are turned into steel based items and new cans.

**Textiles** are sent to Birmingham where, after sorting, they are sent around the world for reuse.

### What can we do to reduce the amount of landfill waste?

Firstly, I'm sure that we can all make more use of the kerbside collections. As we are about to throw something into the kitchen rubbish bin, just pause and think 'can this be recycled'

Also, most of us visit the local Supermarket each week. They generally have a recycling facility in the corner of the car park which will take a huge amount of recyclable material and often then have an internal disposal point for items such as **batteries** and the like.



Another major collection point near to us is at Pool, but if you would like further information it is obtainable from the Cornwall Councils One Stop Shops or there is a helpline on 0300 1234141 or visit <http://www.recyclenow.com/>



**Please do your bit to help.**

**3000 BC - In the Cretan capital, Knossos, the first recorded landfill sites were created where waste was placed in large pits and covered with earth at various levels.**

**The other side of the coin:** Critics argue that the costs and energy used in collection and transportation detract from, and even outweigh the costs and energy saved in the production process; also that the jobs produced by the recycling industry are a poor trade for the jobs lost in industries associated with new production; and that materials such as paper pulp can only be recycled a few times before material degradation prevents further recycling. Proponents of recycling dispute each of these claims and the validity of arguments from both sides has led to enduring controversy.



Lead Picture is the front façade of the Village Hall, Churchtown

### Village Hall Hire

The hall is available for parties, receptions, meetings and conferencing at very competitive rates. Facilities include the main hall, a fully equipped kitchen and a meeting/training room. Tables and chairs are also available as is a public address system.

To book or for more information **contact** Sue Skewes on 01209 843575



### Help Wanted

*Sadly the Treasurer, Julia Pascoe, has stood down from the committee and we are all very grateful for her active contribution to the running of the hall and wish her well for the future. The role has been split, and the hall now requires a volunteer Assistant Treasurer, who will help the new treasurer with invoicing & banking. If anyone can spare about an hour a week and would be prepared to come to about 5 meetings a year then we would very much like to hear from you. Please phone 01209 843845 for more information*

### Improvements

The organisers are pleased to announce that Young People Cornwall have been awarded a grant to improve the garden / patio area beside the car parking spaces. Members of the youth project, assisted by the leaders, had to put in a lot of effort, in order to get it. Well done to Jemma, the YPC team and all the young people of the parish who worked on the bid.



The hall will shortly be installing stage curtaining to create a contemporary performance space for visiting theatre companies and for our own amateur dramatics group. There will be more to follow in the next issue of the Review.

We are very lucky to have a good range of craft activities on offer at the Village hall.

**Bridge Stitchers and Crafters** is a thriving craft group whose members make a wide range of craft items using a variety of materials. As the name suggests needle craft is one of the main activities but other craft skills are encouraged and welcome. The club meets on alternate Wednesdays. Phone 01736 757726 for more information.

One of our new activities is the **scrapbook club**. They meet once a month on a Wednesday afternoon.

**Contact** Margaret Jewett 01209 843199 for more information.

Alternatively why not pop along to the card making group **Stamp Your Art Out**. They meet on Thursday evenings once a month. All are welcome – no experience necessary. For more Info: Phone 01209 832310

*If Scale Models are more your thing then why not come along to the Cornwall Scale Modellers club which meets most Fridays. Modelling is suitable for most age groups from teenagers through to the most senior of residents. A steady hand and plenty of patience are all that is required. Help and guidance is always on offer for new members. Phone 01736 757726 for more information.*

Never test the depth of the water with both feet at the same time !

**The following groups meet on a regular basis**

**MONDAYS**

**Toddler Group** Mon 1pm to 2.30pm

**Indoor Sports – table tennis**

Mon from 6.30pm.

Families & U18's 6.30pm - 8pm.

**Youth Group for teenagers** Mon from 6.30pm.

Some Saturdays (check with youth leader for details)

**TUESDAYS**

**Slimming World** Tues at 6.30pm. **Contact** 01209 215653.

**WEDNESDAYS**

**Bridge Stitchers and Crafters**

1st and 3rd Wed each month 1.30pm - 4.30pm.

**Contact** 01736 757726.

**Scrapbook Club** 4th Wed each month 1.30pm - 4pm.

**Contact** 01209 843199.

**Youth Club (7-11's)** Wed 5.45 - 7.15pm (term time only)

**Women's Institute** 1st & 3rd Wed each month 7.30pm to 9.30pm **Contact** 01209 890512.

**THURSDAYS**

**Hatha Yoga** Thurs 10.30 – 12.00

**1st Illogan Scouts** Thurs 6.30 – 8pm

**Cubs (8 – 10 ½ yrs)** and **Scouts (10 ½ - 14yrs)** term time only) 7.30 – 9pm

**contact** 01209 213970 or [susan.barkle@talktalk.net](mailto:susan.barkle@talktalk.net) .

**Stamp Your Art Out**

1st Thurs each month 7pm to 9pm. **Contact** 01209 832310.

**FRIDAYS**

**Cornwall Scale Modellers** Fri except 2nd week each month 7pm to 10pm. **Contact** 01736 757726.

**ILLOGAN ALLOTMENT ASSOCIATION**

The next meeting of the Allotment group will be at 7:00pm in the Parish Room of St. Illogan Church, Church Road, on MONDAY 11th APRIL 2011.

This meeting will be the AGM and will be followed by our annual seed and plant swap evening.



If there are any nominations, or anyone prepared to stand for the officer positions of the association then please let the secretary know by March 31st 2011.

Since our last meeting on October 11th 2010, we have had no further news on the availability of any suitable land.

In the meantime, the Chairman and secretary will still be attending the Full Parish Council meetings on Wednesday evenings to see what progress they are making on the Associations behalf. If you would like to give us some support the monthly meetings of the Parish Council are on the 3rd Wednesday in the month at 7:00pm in the Penwartha Hall.

Anyone wanting further information about the group please **contact** the secretary: -

Mrs J. Opie, at 3 Colborne Avenue, Illogan. TR16 4EB, or on 01209 842622 or by email: [trevjo@supanet.com](mailto:trevjo@supanet.com).

**October 26, 1863 - Thomas Merritt**, composer of famous carols was born at Broad Lane, Illogan on October 26th 1863, the son of a copper miner. He attended Pool School until his father died when Thomas was aged 11. For a time Thomas then worked at Carn Brea mine and later Tolvaddon Tin Streams. Mr Humphrey Broad taught him music for about 6 months at Redruth when he was about 18 or 19, but apart from that he appears to have had no formal training. For a period he was organist at the Chili Road Chapel.

**Technical Issues: A computer once beat me at chess,  
but it was no match for me at kick boxing.**



*The Seventh Day Adventists are based in Voguebeloth. Contact telephone number 01726 851792 –Services are held every Saturday and all are welcome to attend: –10:15 Divine Service and Sabbath School (all ages)  
First and Third Wednesday 19:00 Prayer Meeting*





## THE WELLBEING CENTRE

7

**Asking a dumb question is easier than correcting a dumb mistake !**

There's a lot going on in the centre, following is a list of event which you may find of interest:

### Monday

10.30am to 12.30pm Core Group Exercises for over 50s **contact** 01209 842999 for prices/details  
7pm to 9pm Iyengar Yoga - with Janice Longstaff - Bookings **contact** 01209 616312

### Tuesday



12.30pm to 3.30pm Old School Diner open for refreshments ) Not 1st Week  
12.30pm to 3.30pm Library day - Book sale and exchange ) of the Month  
6.30pm - 8pm Vin Yasa Flow Yoga with Nathalie Bennett - **Bookings** 616312

### Wednesday

10am Breath of Fresh Air Walk **contact** 01209 842999  
10am to 12 noon Iyengar Yoga with Janice Longstaff - Bookings **contact** 01209 616312  
6pm to 8pm Calligraphy with Stephanie (Term Time) **contact** 07837 059085 or  
info@stephanerouget.com  
6.30pm to 8.30pm Anusari inspired Yoga with Jock Orton **contact** 07770 440300



### Thursday



11am to 12 noon MS Society Yoga **contact** 01209 832108  
6.30pm to 7.30pm Qi Gong with Dave Sowden **contact** 01872 573776

### Friday

12 noon - 2pm Old school diner lunches - 2nd; 3rd & 4th Fridays of month— Details **contact** 842999  
5.45pm to 6.45pm Rainbows **contact** Karen Copas 01209 313226  
7.00pm to 10.00pm Illogan Short Mat Bowls League matches.  
7.30pm to 10pm Circle Dance with Emma **contact** 07773 682340



**Saturday** Tabletop Recycle Sales  
3<sup>rd</sup> Saturday of month Feb to Nov 10am to 12noon  
**contact** 01209 842999

### Sunday

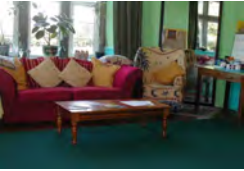
10am to 3pm Healing Group 2nd Sunday of the month **contact** 01209 842999  
7pm to 9pm Redruth Bowling Club – Short Mat Bowls 'roll up' **contact** 01209 842999



*In calligraphy - the irregularity in the characters' size, style and colours adds meaning to the literal Greek translation "beautiful letters". Calligraphy continues to flourish in the forms of wedding and event invitations*



*The intrepid Wellbeing walking group on a brisk January morning. The group walks take place on a Wednesday morning starting at 10am. The Wellbeing asks for a 50p donation to cover admin and there is an optional 40p for a cuppa and sit down after the walk. Details: **01209 842999***



The lead picture is a part view of one of the halls in the Wellbeing Centre

### Wellbeing Centre Venue Hire

Our Lounge Library is a popular venue for day time meetings. It's sofas and armchairs provide a comfortable, relaxing setting. Tea and coffee making facilities are available.

The Assembly Hall has kitchen access and is a spacious room suitable for parties and functions. The sprung wooden floor is ideal for dancing. We have gardens and car parking and the Centre has disabled access.

Hall hire is £6 per hour, both halls £12 per hour, full kitchen facilities hire is £10 per hour - kitchen access only is normally free. For bookings please **contact** the Co-ordinator, Jeanette Tapping on 01209 842999.

**Support the Wellbeing Centre** by becoming a member of the Self Heal Trust.

The Trust acquired its premises in 1980, and with support and help, the old school buildings were transformed, and the Wellbeing Centre was created. The purpose of the Centre is to promote a holistic approach to health and wellbeing, through the provision of facilities, information, and experience, for everyone.

The central aim comes from a belief that real health is a positive feeling of wholeness. The Centre provides a broad range of opportunities for people to explore. There are many regular activities covering Health and Fitness, Spiritual, Education and Community interests. Our regular newsletter lists what's on and further information is available on our newsletter at [www.wellbeingcentrenews.moonfruit.com](http://www.wellbeingcentrenews.moonfruit.com)

You do not have to be a member to hire or attend activities at the Centre however your support helps with the Centre's running costs and gives you the opportunity to input ideas. For further information regarding subscription fees please **contact** the Centre on 01209 842999 or write to Self Heal Trust, Wellbeing Centre, Churchtown, Illogan, Redruth TR16 4SW

**Help the Self Heal Trust** to raise money by shopping on line. When you buy from over 2,000 well known retailers like Amazon, M & S, eBay, John Lewis and many more. It's free and your shopping wont cost you a penny more. Sign up to support the Self Heal Trust and you could win £300 to spend with The House of Fraser - 01209 842999

### Library Days

Tuesdays 12.30 to 3.30pm on the 2nd 3rd & 4th Fridays of the month. The Centre's Library is open for book exchange, the purchase of second hand books and also the sale of plants. Any donations of unwanted books to the Centre are welcome. Teas and Coffee are also available throughout the opening time.



**Tabletop Sales** are held on the 3rd Sat of the month. Refreshments available & please note the new time of 10am - 12noon Table booking & prices **contact:** 842999



**Breath of Fresh Air Walks** take place on Wednesday mornings each week leaving the Wellbeing at 10am. Generally, circular walks, around Illogan, a walk through Illogan & Portreath Woods, Tehidy Woods or down to Watergate. Nothing too strenuous, just a gentle amble with plenty of opportunities to pause and take in the views .

**level 1** typically is a stroll through Spar Lane and Maningham Woods lasting about an hour.

**Level 2** is a circular walk down through Watergate, some of it is on footpaths and also lasts just over an hour.

**Level 3** is typically a walk down through Illogan woods with a return through Portreath Woods. This is a little steeper in places and much of it is on footpaths which can get a little muddy after rain and will last about 2 hours. Further details of the walks and other activities from Jen on 01209 842999 or from the website



[www.wellbeingcentrenews.moonfruit.com](http://www.wellbeingcentrenews.moonfruit.com)

*Some issues ago I ran a short article about Geocaching and some considerable interest has since been shown. There are several 'geocachers' in Illogan and the immediate surrounds and hundreds of hidden caches in the area . Info at [www.geocaching.com](http://www.geocaching.com)*





## ILLOGAN PARISH CHURCH

9

**Contact:** Reverend Cannon Mike Kippax 842233

### Sunday Services

**8am** 1st Sunday of month, Holy Communion  
**10.30am** 2nd, 4th & 5th Sundays, Communion,  
**10.30am** 1st Sunday of month, Morning Worship & Baptism  
**10.30am** 3rd Sunday of month, Celtic Morning Worship  
or Matins  
**3.45pm** 2nd Sunday of month, 'Mussy Church'  
**4.30pm** Teatime Service followed by a 'bring and share' Tea  
**6pm** 1st & 3rd Sunday of month, Communion  
**6pm** 2nd Sunday of Month, Evening Prayer  
**6pm** 5th Sunday of month, Taize' Service

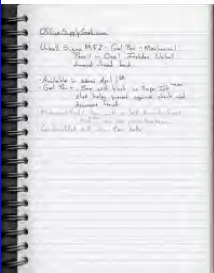
### Wednesday Services

**10.30am** Holy Communion on alternate Wednesdays when  
there has been no Sunday Morning Communion.

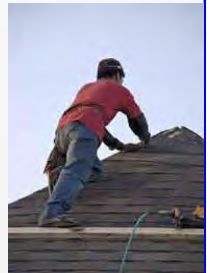
### Regular Events in the Parish Room

**9am** Thursdays, Tea & Toast & Slim Club  
**10am** Alternate Wednesdays on non Communion days, Fun,  
Fitness & Fellowship  
**12 Noon** 1st Tuesday of month, Lunch  
**2pm - 4pm** Every Friday Tea & cake, Jeans market offering  
Home Made Produce, Jam & Eggs. Local produce Veggie boxes  
available. For details & to order **contact** Gill on 843101 ,  
Louise on 07966 897561 or visit [www.healthyboxes.com](http://www.healthyboxes.com)  
**2.30pm** 3rd Wednesday of month, Women's Fellowship  
**7pm** 1st Thursday of month, Mothers Union  
**Every Wednesday Evening** Choir Practise. For details **contact**  
Mike Semmons via Mike Kippax  
**Alternate Friday** Evenings 'Detonate' Youth Club For details  
**contact** Monica Wilkes on 843082

### Notes:



1. To book events in the Parish Room **contact** Mike Kippax on 842233 or Thelma Rolling on 843348
2. The Parish Magazine 'LINK' is available from the Post Office on a monthly basis
3. Please support the 'Raise the Roof' project. The Church is to receive a generous grant from English Heritage, but still has to raise a considerable amount of self funding to qualify. Regular progress updates can be found in the 'LINK'
4. Clearing and Tidying of St Illogan Churchyard under the Cornwall Living Churchyard Project takes place at regular intervals and volunteers are required to assist.  
For further details **Contact** Andrew Tompsett on 842316



### Some dates for your diary:

Ash Wednesday 9th March - 7pm Holy Communion  
Good Friday 22nd April - 10.30am Service of Meditation  
Easter Day 24th April - 10.30am Holy Communion



The new church of St Illogan was built at a cost of £2,875 and came into use on 4th November 1846. However, almost two years passed before the Bishop of Exeter turned up to consecrate the building, possibly one of the triggers for Cornwall to have its own diocese. Interestingly, the dedication to St Edmund appears in several references to the new building, but this is apparently incorrect.



1885. The east end and south side of the church.  
The old tower is clearly visible in the background  
This is a view now obscured by the present trees

Another church notice (Not ours !) - Miss Charlene Mason sang 'I will not pass this way again,' giving obvious pleasure to the congregation.

*The diocese's area is that of the Duchy of Cornwall including the Isles of Scilly. It was formed on 15 Dec. 1876 from the Archdeaconry of Cornwall in the Diocese of Exeter, it is thus one of the younger dioceses. However, the Christian faith has been alive in the region since at least the 4th century AD - more than 100 years before there was an Archbishop of Canterbury.*

To be sure of hitting the target, shoot first and call whatever you hit the target

## Make Life easier - AskSARA

The Disabled Living Foundation (DLF) is a national charity that provides impartial advice, information and training on daily living aids. DLF is also a founder member of the Information Standard,



AskSARA is an easy-to-use, award-winning online self-help guide that is particularly useful if you are not sure what items might help you.

There are three easy steps:

1. You choose from a list of topics relating to difficulties you might have with different daily living activities or conditions
2. You answer questions about yourself and your environment
3. You read or print the report you receive based on your answers, which contains useful advice written by a team of occupational therapists and ideas of items of equipment that might help you, and their suppliers, both national and local.

The service is a free, impartial, easy to use on-line tool which gives advice on equipment which can make your day to day activities easier, and there is free use of a computer in libraries and One Stop Shops in Cornwall. This service is presently being promoted by Cornwall Council **Contact:** [www.cornwall.gov.uk/asksara](http://www.cornwall.gov.uk/asksara).

## **The Cornwall Air Ambulance**

An appeal has been launched for £30,000 for funds to buy a Schiller Heart-Rate Monitor. This is a portable piece of equipment that will enable air ambulance paramedics to monitor the condition of patients from the moment that they are picked up.

A spokesperson has said that existing equipment is 10 years old and this intended replacement is more lightweight and compact. The iconic red air ambulance has been helped by the people of Cornwall throughout its 23 year history and costs £1.5Million each year to keep flying and has completed more than 22,000 missions to date.

If you are in a position to help with donations or other support it would be greatly appreciated by the organisers—**Contact:**

Cornwall Air Ambulance  
Trust  
Victoria Square  
Roche  
St Austell  
PL26 8LQ



**I'm informed by an academic that the word:**  
**Hippopotomonstrosesquippedaliophobia**  
**Means, of all things, the fear of large words!**

### **A selection from e-mails:**

**Editor** - I was shocked to hear the Home Secretary say that Britain 's prison population has been ballooning for the past ten years. My God, has the world gone mad? Those people are there to be punished, not to be given 'thrill of a lifetime' experiences that most law abiding citizens can only dream of.

**Sir** - The person who coined the phrase 'as different as chalk and cheese' obviously hadn't tasted a particular local supermarkets own brand cheddar.

**Dear Roger** - On the BBC website, I read with interest that scientists in Australia have discovered the smallest fish known to exist. They've obviously never been to some of the Chippies I've visited.

*The first recorded British ambulance flight took place in 1917 in Turkey when a soldier in the Camel Corps who had been shot in the ankle was flown to hospital in a de Havilland DHH in 45 minutes. The same journey by land would have taken some 3 days to complete.*



## PAYNTERS LANE END METHODIST CHURCH HALL

11

**For further information contact Stella Rule on 842425**

Sunday Services are held in the Church, The Morning Service starts at 10.45am—The Sunday School beginning at 10.30am and the Evening Service starts at 6pm. All are welcome to attend.

### Regular events held in the chapel Hall are:

Illogan Country Market is held every Tuesday between 9.15—11am with refreshments available. Also available for purchase are normally home baked goods, savouries and cakes, a selection of preserves, honey and chutney and free range eggs. Fresh meat is available, individually wrapped, and is supplied from a local farm butcher. There is also a good selection of vegetables, flowers and plants.

Additionally there are craft tables showing hand and machine knitted items, hand made greeting cards, many sewn items and a display of the woodcarver's skills.



**Orders for items can be made, and a gift parcel service is available for order deliveries to be made to friends and family.**



### ST Pirans Day 5th March

The modern observance of St Piran's day as a national symbol of the people of Cornwall started in the late 19th and early 20th century when Celtic revivalists sought to provide the people of Cornwall with a national day similar to those observed in other nations. Since the 1950s, the celebration has become increasingly observed and since the start of the 21st century many Cornish communities holds celebrations to mark the event. Saint Piran's Flag is also seen flying throughout Cornwall on this day.



Legend tells us how Piran, originating from Ireland and know there as 'Ciran' (the Cornish language naturally mutates the first letter to a softer 'P'), was cast to sea tied to a millstone on the order of the Irish King who was suspicious of Piran's miraculous powers. Although the sea was treacherous Piran survived, the stormy seas calming as he floated on the millstone until he reached the shores of Cornwall. Many Cornish names now echo Piran's, for example 'Perranporth', 'Perranzabuloe' and 'Perranarworthal'. It was at Perranporth beach, however, where Piran was



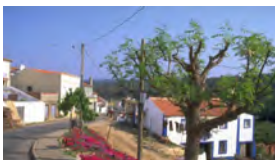
said to have landed, and where he began to build an oratory to promote Christianity. The oratory is now preserved in the towans (sand dunes) at Perran Sands and his first disciples were said to be a badger, a fox and a bear! Piran is perhaps most famous for his accidental discovery of tin, when a blackstone on his fireplace got so hot that a white liquid leaked out; the first tin smelting. It was this discovery that earned Piran the title Patron Saint of 'Tinnars', tin mining, historically being a fundamentally important industry in Cornwall.

It was this discovery that also formed the basis of the Cornish flag, the white hot tin on the black of the ore. The Cornish flag is now used universally as a symbol of Cornish identity, from stickers on cars through to corporate organisations using the flag to identify 'Cornishness' to a global audience. According to legend St Piran was fond of a tippale or two, and the phrase 'drunk as a Perraner' has become common place.

**"I am." is the shortest complete sentence in the English language.**

*St Piran's day is also celebrated annually as far away as Grass Valley, California, to honour the Cornish miners who participated in the area's mining history beginning in the mid 19th century.*





A bargain is something you don't need at a price you can't resist !

CANCER RESEARCH UK



Fund raising events will be held in the Parish in the near future. Your support, as always, would be very welcome:



**Thursday 10th March 9am until 12.00 Noon Big Breakfast**  
The Sunday School Room,  
Paynters Lane End Eat in or take away. Hot Bacon Rolls, donuts

coffee and tea etc.

**2nd May 9am Annual Plant Sale**

**Illogan School admission free.**

Many plants, market stalls, raffles etc. For Further information

**contact : Janet on 890512**



### ILLOGAN WOMEN'S INSTITUTE

Are you new to the area or recently retired or looking for some 'ME TIME' in the evenings

Why not come along to one of meetings

We are a friendly, multi-talented group of women with many diverse skills and interests who meet on the first and third Wednesday of each month at 7:30pm in The Village Hall, Churchtown, Illogan.

Forthcoming Meeting Dates:

February 2nd & 16th - March 2nd & 16th - April 6th & 20th



Forget about JAM & JERUSALEM we're now more into Wii's, SURFING, SUSTAINABLE ENERGY AND RECYCLING.

If craft work, cookery and floral art are more YOUR THING we offer help & expertise in these skills as well.

**WANT TO KNOW MORE?** Ring Janet Mitchell on 890512 or come along to one of our meetings

### Mobile Library

**Contact** 0300 1234111 (calls are charged)

Fortnightly on Wednesdays

December 8th & 22nd

January 5th & 19th

February 2nd 16th & 30th



### **Stops:**

Mount Whistle Road 9.15 - 9.25

Tolvaddon Industrial Estate 09:30 - 09:45

Chywoon Gardens 12.55 - 13.25

Druids Road 13.35 - 13.45

Richards Lane 14:25 - 14:50

Park Bottom (Spar Shop) 15:00 - 15:15

Mary's Well 15:25 - 15:35

Coronation Road 15:45 - 16:00

Robartes Arms 16:35 - 17:00



**Voluntary Housebound Service Monthly – individual requirements assessed. Contact as above.**

The first mobile library in Britain is thought to have been the Warrington Perambulating Library in 1859. This horse-drawn vehicle was run by the Warrington Mechanics' Institute to increase its annual circulation of books. The cost in the first year was £275 and the library lent nearly 12,000 books.

An early bookmobile in the United States was a mule-drawn wagon which carried wooden boxes of books in Chester County, South Carolina. The People's Free Library started this service to the rural areas of Chester County around 1904.

**There is a Camel Library Service in Kenya. This service is funded by the Kenyan government as a charity**

The library ship Epos serves many small communities in Western Norway.

A couple of technological ironies ?

**A donkey-drawn mobile library in Zimbabwe is being used to not only deliver books, but also to deliver access to the internet and multimedia.**

There are elephant Libraries in Thailand which are used to take books and IT equipment and services to remote villages.

**Have you ever noticed - The hardness of the butter is directly proportional to the softness of the bread !**

*Cancer Research UK is the largest single funder of cancer research in the UK and the world's largest charity dedicated to cancer research.*

*The history of Cancer Research UK and its impact stretches back over a century*



**Disclaimer:** The views expressed in printed letters are not necessarily those of the Editor or Illogan Parish Council

Dear Editor

*I wonder how many of our readers receive unwanted e-mails on their computers, and wonder how these people get their addresses?*

*There is a lazy way of forwarding e-mails and there's another way to avoid unscrupulous people getting hold of them. In the lazy way, every time you forward an e-mail there is information left over from the people who got the message before you, namely their e-mail addresses and names. As the message gets forwarded on and on, the list builds and builds showing dozens and dozens of e-mail addresses. To avoid this happening, when you hit 'Forward' delete all of the addresses that appear in the body of the message - at the top - by highlighting them and delete. Also delete everything on the page other than the message which you intend forwarding. If you then intend forwarding the message to numerous people - like we do, as for myself, I enter my own e-mail address in the 'To' column and enter all of the remaining people's e-mail addresses in the BCC (Blind Carbon Copy) column - separating each one by a semi-colon. You will then receive a copy of your 'sent' e-mail along with the list of people to whom you've sent them, for reference. But, the recipients will only see their name. It's been said, in the past, that it's rude to use the BCC, but in this day and age, unfortunately it's become a norm thing to do in order to avoid unwanted mail and/or viruses. If you can't see your CC and BCC columns - just under the 'To' column, just look to the top of the e-mail page and where it says 'View', click on that and you'll either see BC and BCC (or View All Headers) Check this box with a Tick. Happy Safe E-mailing for 2011.*

*Barry Thomas. NHW Co-ordinator/Police Volunteer 60055  
Rainham Close.*

Dear Editor,

*I am receiving quite a few complaints with regard to dog fouling within the area. This, it seems is reaching epidemic proportions across Illogan Parish. As well as being unsightly, it is also unhygienic and more importantly, a danger to young children.*

*I ask all dog owners to pick up after your dog(s) and remove the unsightly mess and deposit it in the dog bins installed around the Parish or, put it in your domestic waste. The fine for being caught is an £80 fixed penalty ticket and, if not paid can come to a court appearance and rise to a £1000. Cornwall Council takes dim view on dog fouling and has a 'zero tolerance' attitude when perpetrators are caught.*

*Dog Wardens will be operating in the area over the next few weeks in both daylight and the evening. Individuals walking your dog(s) after dark, please remember to go prepared with a torch and the necessary bags.*

*Yours faithfully, Terry Wilkins CC MBE*



*The air mail service in the UK started in 1930. This is a photograph of a Morris Air Mail van delivering directly to an Imperial Airways biplane at Croydon Airport in that era.*



## Scouting & Guiding

1st Illogan Scout Group At Illogan Village Hall

Thursdays weekly

### Scouts

Thursdays 7.30 - 9pm

### Cubs

Thursdays from 6.30 - 8pm

8 – 10 1/2 years

**Contact** Sue Barkle on 213970 or email  
susan.barkle@talktalk.net

**Please note:** There are currently a few spaces in Scouts and Cubs so email Sue or phone to find out more.

**Helpers and Leaders** always needed.

Contact Sue if you are able to help. Offers from Ladies as well as Gents would be great.



**Rainbows** At the Well-being Centre

Friday 17:45 – 18:45 5 – 7 years

**Contact** Karen Copas 313226

**Brownies** At the Methodist Church Hall

Thurs 18:00 – 19:30 7 – 11 years

**Contact** Elaine Spinks 313942

**Rainbow, Brownies & Guides At** Pool Methodist Church

**Contact** Sandra Cox 719741

**Please note:** there is a waiting list for the Guides  
Please contact Sandra before attending.

**NHS** - There are a lot of changes taking place within the structure of the NHS at the present time. There is a public meeting in our area where you can find out what's happening and have your say on Thursday 31st March between 10am and 11.30am at The Community Centre, Chapel Street, Redruth

The shinbone is a device for finding furniture in a dark room !

## Illogan Pre-school Play Group

Ages from 2 to school age

Mondays to Fridays in school term  
times between 9am to 3pm

**Contact:** Teresa on 843386 for  
further information



## What is Easter?

Easter is the time for holidays, festivals and a time for giving chocolate Easter eggs. But Easter means much more....Easter is the oldest and the most important Christian Festival, the celebration of the death and coming to life again of Jesus Christ. For Christians, the dawn of Easter Sunday with its message of new life is the high point of the Christian year.

What is the Easter story ?

Easter is the story of Jesus' last days in Jerusalem before his death. The Easter story includes Maundy Thursday (the Last supper leading to the Eucharist), Good Friday (the day on which Jesus was crucified) and Easter Day (the day on which Jesus came back to life).

Where does the name 'Easter' come from?

Pagan traditions give us the English word "Easter" which comes from the word "Eostre". The Anglo-Saxon word for April was "Eostre-monath" (the month of openings). However, it should be remembered that Christians celebrated the resurrection of Christ long before the word "Easter" was used, and the word they used for the celebration was "Pascha", which is derived from and linked to the Jewish festival of Passover.

According to 'the venerable' Bede, the English monastic historian, the English word Easter comes from the Anglo-Saxon name for the month of April, which was known as "Eostremonath" in the Anglo-Saxon tongue and since Pascha was most often celebrated in Eostremonath, the English Christians began calling it "Easter". Bede also notes that the month was named after the Anglo-Saxon Goddess Esostre.

The summit of Bodmin Moor's 'Brown Willy' (Cornish: Bron Wennyly meaning swallows' hill) is the highest point in Cornwall

*We take the National Health Service for granted now, but it is only just over 60 years ago that health care was a luxury not everyone could afford. Its inception meant professional services were available to the poor instead of them relying on dubious and sometimes dangerous home remedies*





## SOME FRUITS TO SAVOUR

15

**You think nobody cares if you are alive ? Try ignoring your Rates bill !**

**Apples** and other fruit form an important part of diet and, with veg, are the basis of the healthy eating campaign '5 a day'. Many products can now easily be obtained from almost any major grocery store all year round.



The apple is the pomaceous fruit of the apple tree, species *Malus domestica* in the rose family (Rosaceae). It is one of the most widely cultivated tree fruits, and the most widely known of the many members of genus *Malus* that are used by humans.

The tree originated in Western Asia, where its ancestor, the *Alma*, is still found today. There are more than 7,500 known types of apple trees, resulting in a range of desired characteristics. Their yield varies and is related to the ultimate size of the tree.



The cultivation of the **pear** in cool temperate climates extends to the remotest antiquity, and there is evidence of its use as a food since prehistoric times. Many traces of it have been found in the Swiss lake-dwellings. The word "pear", or its equivalent, occurs in all the Celtic languages, while in Slavonic and other dialects different appellations, but still refers to the same thing.

**Mangoes**, cultivated in the Indian subcontinent for thousands of years, reached East Asia between the 5 and 4th century BC. By the 10th century AD, cultivation had begun in East Africa. The 14th century Moroccan traveller, Ibn Battuta, reported it at Mogadishu. Cultivation came later to Brazil, West Indies and Mexico, where an appropriate climate allows its growth. Mango is now cultivated in most frost-free tropical and warmer sub-tropical climates. Almost half the world's supply are cultivated in India alone.



The common range of the wild **cherry** extends through most of Europe, and the fruit has been consumed through its range since prehistoric times. A cultivated cherry is recorded as having been brought to Rome by Lucius Licinius Lucullus from northeast Anatolia, also known as the Pontus region, in 72 BC. A form of cherry was introduced into England at Teynham, near Sittingbourne in Kent by order of Henry VIII, who had tasted them in Flanders



The **blackberry** is an edible fruit produced by any of several species in the *Rubus* genus of the Rosaceae family. The fruit is not a true berry; botanically it is termed an aggregate fruit, composed of small drupelets. The plants typically have biennial canes and perennial roots. Blackberries and raspberries are also called caneberries or brambles. It is a widespread, and well known group of over 375 species, many of which are closely related apomictic micro species native throughout the temperate northern hemisphere and South America.



**Strawberries** are grown for their edible fruits. Originally straw was used as a mulch in cultivating the plants, which may have led to its name. There are more than 20 described species and many hybrids and cultivars. The most common strawberries grown commercially are cultivars of the garden strawberry, a hybrid known as *Fragaria ananassa*. Strawberries have a taste that varies by cultivar, and ranges from quite sweet to rather tart. Strawberries are an important commercial fruit crop, widely grown in all temperate regions of the world.



**Bananas** are naturally slightly radioactive, more so than most other fruits, because of their high potassium content, and the small amounts of the isotope potassium-40 found in naturally occurring potassium. Proponents of nuclear power sometimes refer to the banana equivalent dose of radiation to support their arguments.



**Scrumpy** is a term used for strong ciders made in West Country of England. The term is especially used to distinguish those made locally in smaller quantities and using traditional methods from mass produced branded ciders. The name is believed to derive from the obsolete dialect term "scrimp", meaning a small or withered apple, which also gave rise to the verb "scrimp", meaning to steal fruit. It can be applied to basic home made ciders as well as to commercially produced and marketed varieties which can be sweet or dry.

Knowledge is knowing a tomato is a fruit; Wisdom and experience means not putting it in a fruit salad.

*Apples have a good claim to promote health. They contain Vitamin C, which aid the immune system and phenols, which reduce cholesterol. They also reduce tooth decay by cleaning one's teeth and killing off bacteria. It has also been suggested by Cornell University researchers that the quercetin found in apples protects brain cells against neuro-degenerative disorders like Alzheimer's Disease.*

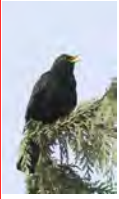


## MANINGHAM WOOD

16

**Volunteers always welcome** - please **contact** Nola on  
07726835475 or 07968017419

Saturday, April 30th



### CELEBRATE THE DAWN CHORUS

6.30am start (yep, that's right folks!)

Come and learn how to identify the songs of local woodland birds and then join our bird expert on a walk to listen to them sing in the dawn. Hot drinks will be provided at the start of the event to wake everyone up! Meet in the car park of Harris Memorial Surgery and wear warm clothing and walking shoes.

This event will **NOT** take place in heavy rain.



**By Editor:** Here are some of the genuine comments about Maningham Wood which I have received by email over the last few months:

*Nice little walk around this wood, quiet on a damp foggy afternoon.*

*Been past this wood several times without knowing it was there.*

*A nice walk round*

*Never been in here before, had the place to ourselves which was nice.*

*Lovely spot - woods were deserted on Sunday  
Delightful little wood that we didn't know was here.*

*I had the woods to myself!*

*A lovely afternoon walk close to home where the children like to ride their bikes.*

*I was quite surprised that there was a woods here, I had driven by this a few times whilst out working in the community and never realised it was here!*

*A lovely little wood, just a mile down the road from us, and yet it's another place we didn't know was there!*

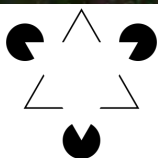


Thanks to the friends of Maningham Wood who have repaired and reassembled the 'Bug Hotel' following the vandalism of a few months ago. As the bugs have now settled back in, it is hoped that there will be no repeat



*The refurbished and present day Maningham Woods was originally part of the grounds of Maningham House.*

*The house was once Rectory to the church of St Illogan but is now a private residence and was given a Grade II listing on the 12th September 1989*



The Kanizsa triangle is an optical illusion first described by the Italian psychologist Gaetano Kanizsa in 1955. A white equilateral triangle is perceived, but in fact its not actually drawn. This effect is known as a subjective or illusory contour. Also, the non existent white triangle appears to be brighter than the surrounding area, but in fact it has the same brightness as the background.

Look at your zipper. See the initials YKK? It stands for Yoshida Kogyo Kabushibibaisha, the world's largest zipper manufacturer.



*The first product to have a bar code was Wrigley's gum and chewing gum while peeling onions will keep you from crying.*





## A BIT FURTHER AFIELD THAN CAMBORNE !!

17

The lead picture is the 559 km (347 mile) high, orbiting Hubble telescope



The **Sun** is the most prominent feature in our solar system. It is the largest object and contains approximately 98% of the total solar system mass. One hundred and nine Earths would be required to fit across the Sun's disk, and its interior could hold over 1.3 million Earths. The Sun's outer visible layer is called the photosphere and has a temperature of 6,000°C (11,000°F). This layer has a mottled appearance due to the turbulent eruptions of energy at the surface. Although seen as yellow the Sun's colour is white.

**Mercury** was named by the Romans after the fleet-footed messenger of the gods because it seemed to move more quickly than any other planet. It is the closest planet to the Sun, and second smallest planet in the solar system. Its diameter is 40% smaller than Earth and 40% larger than the Moon. It is even smaller than Jupiter's moon Ganymede and Saturn's moon Titan. Mercury is similar in appearance to our Moon, being heavily cratered



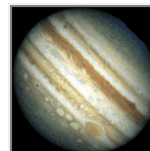
**Venus**, the jewel of the sky, because of its brightness, was once known by ancient astronomers as the morning star and evening star. Early astronomers once thought Venus to be two separate bodies. Venus, which is named after the Roman goddess of love and beauty. It is veiled in thick, swirling, highly reflective, sulphuric acid, cloud cover.

**Earth**. We get the impression that our planet appears to be big and sturdy with an endless ocean of air. From space, astronauts often get the impression that the Earth is small with a thin, fragile layer of atmosphere. For a space traveller, the distinguishing Earth features are the blue waters, brown and green land masses and white clouds set against a black background. Earth is the fifth-largest of the nine planets (Inc Pluto) in the Solar System.



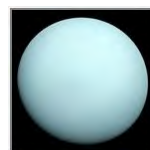
**Mars** is the fourth planet from the Sun and is commonly referred to as the Red Planet. The rocks, soil and sky have a red or pink hue. The distinct red colour was observed by stargazers throughout history. It was given its name by the Romans in honour of their god of war. Other civilizations have had similar names. The ancient Egyptians named the planet Her Descher meaning the red one. The 'redness' is caused by iron oxide.

**Jupiter** is the fifth planet from the Sun and is the largest planet in the solar system. If Jupiter were hollow, more than one thousand Earths could fit inside. It also contains two and a half times the mass of all the other planets combined. It has a mass of  $1.9 \times 10^{27}$  kg and is 142,800 kilometres (88,736 miles) across the equator. Jupiter possesses 62 known satellites and is primarily composed of hydrogen, with a quarter of its mass being helium



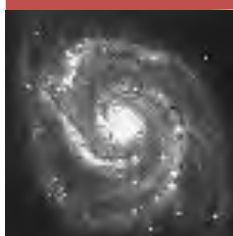
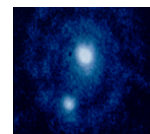
**Saturn** is the sixth planet from the Sun and is the second largest in the solar system with an equatorial diameter of 119,300 kilometres (74,130 miles). Much of what is known about the planet is due to the Voyager explorations in 1980-81. Saturn is visibly flattened at the poles, a result of the very fast rotation of the planet on its axis, and of course has spectacular rings which can be seen with a small telescope.

**Uranus** is the seventh planet from the Sun and is the third largest in the solar system. It was discovered by William Herschel in 1781. It has an equatorial diameter of 51,800 kilometres (32,190 miles) and orbits the Sun once every 84.01 Earth years. It has a mean distance from the Sun of 2.87 billion kilometres (1.78 billion miles).



**Neptune** is the outermost planet of the gas giants. It has an equatorial diameter of 49,500 kilometres (30,760 miles). If Neptune were hollow, it could contain nearly 60 Earths. Neptune orbits the Sun every 165 years and it has eight moons. Neptune was discovered on September 23, 1846 using a mathematical prediction.

**Pluto** was discovered in 1930, limited information on the distant object delayed an understanding of its characteristics. It is the second largest of the known dwarf planets. Including the asteroids, it is the tenth largest orbiting the Sun. Its elliptical orbit around the sun is such that it is presently closer to the sun than Neptune.



*The Milky Way Galaxy, commonly referred to as just the Milky Way, or sometimes simply as the Galaxy, is the galaxy in which the Solar System is located. The Milky Way is a barred spiral galaxy that is part of the Local Group of galaxies. It is one of hundreds of billions of galaxies in the observable universe. Our sun is one of several 100 billion stars in our spiral galaxy*





## COMMUNITY — HARRIS MILL HALL, PENWARTHA & FOOTBALL CLUB

18

The lead picture is Marys Well, Illogan

**Harris Mill Hall** For general enquiries **contact** Tina on 842642



**The Illogan Folk Dance Group** - **Contact** Fran on 217918

The Group meets on Thursdays at 7.30pm on the following dates

March 3rd, 17th, & 31st

April 7th, & 21st

May 5th & 19th

**Dancing Freestylerz Children's Disco** - **Contact** Charmaine on 07542 292923

The group meets in term times only on Tuesdays and Wednesdays as follows:

**Tuesdays** 6.30 until 7.30pm for children aged 12 years and above.

**Wednesdays** 5.30 until 6.30 for children aged between 6 and 11 years.



### **Penwartha SCS Club Winter Programme**

#### **Regular Events in the Hall**

**Mondays** 9.30—11am Coffee Morning

**March 3rd** Comer Valley Accordion Band starting at 2.30pm for about 1 and a half hours.

**March 10th** Bingo at 2.30pm

**March 11th** T Dance with Beryl & Betty from 2pm

For the events in April and May please **contact**:

Betty on 843829 for further details.

### **Illogan Royal British Legion Football Club**

**Contact Cleve on 216488**



April 16th Disco Evening

May 28th Disco Evening

Please **contact** Treve directly for details of events

**BINGO !** The earliest reliable description of a game of bingo dates back to around 1838 when the archaeologist John Stephens was travelling in Mexico. He was fascinated by the game of 'La Lotteria', played by hundreds of people at a time, and at that time he offered an account that shows how little the game has changed over the years.

The British Navy had a large garrison in Malta from 1814 and seems to have picked up the game from the Maltese. The game was called **tombola** was officially sanctioned on Royal Naval ships from 1880 and in the British Army as **House** from 1900.

By 1914 the game was well established as a military pastime, popular with all ranks.

The numbers used went from 1-90, with five figures in each row, in exactly the same fashion to that described in Mexico, with bottle tops, uniform buttons or pieces of bread used by players to mark off the numbers called out.



*A tea dance is an afternoon or early-evening dance. The function evolved from afternoon tea, and traces its origin back to the French colonization of Morocco. Books on Victorian Era etiquette even included instructions for hosting such gatherings. A frequent feature of tea dances was the presence of a live orchestra – often referred to as a palm court orchestra – playing light classical music. The types of dances performed during tea dances included Waltzes, Tangos and, by the late 1920s, The Charleston.*



## SOME NICE PICTURES

19

If swimming is good for the figure, how do we explain away the Whales !!



Different species live in harmony in the Antarctic and some will do anything to get in the picture  
*Smile and the world smiles with you*



*Owls are a bird of prey. Most are solitary and nocturnal. Owls hunt mostly small mammals, insects, and other birds, though a few species specialize in hunting fish.*

Emperors are the largest of all penguins—an average bird stands some 45 inches (115 centimetres) tall. These flightless animals live on the Antarctic ice and in the frigid surrounding waters.



Contrary to popular rumour, these are not the signs at the top of Tuckingmill Hill`



*Spring is coming - We Hope !*



On December 10, 1868, the first traffic lights were installed outside the British Houses of Parliament in London, by the railway engineer J. P. Knight. They resembled railway signals of the time, with semaphore arms and red and green gas lamps for night use. The gas lantern was turned with a lever at its base so that the appropriate light faced traffic. Unfortunately, it exploded on 2 January 1869, injuring or killing the policeman who was operating it.

Do you have a funny pic that you would like to see included in the Review - If so please email it to the editor as attachment

*Digital photography is a form of photography that uses an array of light sensitive sensors to capture the image focused by the lens, as opposed to an exposure on light sensitive film. The captured image is then stored as a digital file ready for digital processing*





### Know who your Illogan Parish Councillors are

#### ILLOGAN WARD

**Cllr Ms V.R. Cadby**, 7 Voguebeloth, Basset Road Illogan, Redruth, Cornwall TR16 4EU

**Cllr Miss L. M. Dunstan**, 16 Coronation Road, Illogan, Redruth, Cornwall TR16 4SQ

**Cllr P.T. Holmes**, 24 Coronation Road, Illogan, Redruth Cornwall TR16 4SQ 01209 843292

**Cllr J.V. Mayne**, Primrose Cottage, 51 Alexandra Road, Illogan, Redruth, Cornwall TR16 4EA 01209 842481

**Cllr Mrs V Poole**, 2 Sunnycorner, Ventonraze, Illogan Redruth, Cornwall TR16 4SQ

**Cllr S.R.S. Szoka**, 3 Agar Crescent, Illogan Highway, Redruth, Cornwall TR15 3NG 01209 214735

email stefan.szoka@tesco.net

**Cllr T Wilkins MBE, [Cornwall Council Member for Illogan]** 7 Forthvras, Illogan Downs, Redruth, Cornwall TR15 3XQ 01209 842390 **mobile** : 07081 069317 **email** tewilkins@cornwall.gov.uk

**Cllr I Yates**, Abbotts, Bridge Road, Illogan Redruth, Cornwall TR16 4SA **mobile**: 07798 811790

**Cllr S Richardson**, 39 Chariot Road, Illogan Highway, Redruth. TR15 3LE **mobile**: 07711 587905

email: starichardson@btinternet.com

#### PARK BOTTOM WARD

**Cllr R L Benney, [Vice Chairman]** 8 Forthvras, Illogan Downs, Redruth, Cornwall TR15 3XQ 01209 842177

**Mobile**: 079100 27782 **email**: rogerlbenney@aol.com

**Cllr R J Bentley**, 21 Treloweth Way, Pool, Redruth, Cornwall TR15 3TS **mobile**: 07722 275397

email: rbentley369@aol.com

#### TEHIDY WARD

**Cllr D.W. Davies**, Reflections, South Drive Tehidy TR14 0EZ 01209 713458 **mobile**: 07733 254963

email: duncan@duncandavies.wanadoo.co.uk

**Cllr D. R. Ekinsmyth, [Chairman]** 6 The Woodlands, Tehidy Park, Camborne, Cornwall TR14 0TW

**mobile**: 07811 114971 **email**: davidekinsmyth@talktalk.net **website**: www.davidekinsmyth.mycouncillor.org.uk

**Cllr G.D. Ford**, Haven Hail, 43 Rosenannon Road, Illogan Downs, Redruth, Cornwall TR15 3XF 01209 843275

#### CLERK TO THE COUNCIL

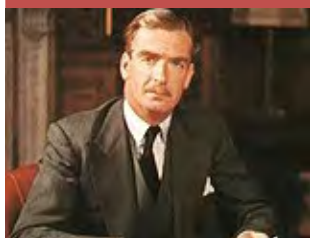
**Mrs S. Ballinger**, Sundown, Wheal Fortune Lane, Illogan Highway, Redruth, Cornwall TR15 3ND

email: illoganpc@btinternet.com **Telephone & Fax**: 01209 212172

#### COUNCIL WEBSITE

[www.illoganparishcouncil.gov.uk](http://www.illoganparishcouncil.gov.uk)

**A Point to remember** - For you information Activities of the Parish Council, planned meeting dates for full council and committees, agenda items and minutes of the previous meetings are all promulgated on the Parish Council website detailed above. Your feedback on the website and its contents would be appreciated.



*Former PM Sir Anthony Eden quote: 'I am one of a rare breed of true politicians who definitely say what they may or may not mean with absolute certainty'. !!*